

DW 506

- ▷ **CHARACTER** EXCELLENT TRACTION & STABILITY. DELIVERS EXCEPTIONAL OPERATOR'S COMFORT
- ▷ **APPLICATON** LOADERS, EARTHMOVERS
EQUIPMENT FOR CONSTRUCTION STOCKPILE & TRUCK-LOADING



SIZE	INTENSITY	LOAD INDEX	TRA CODE	TREAD DEPTH(mm)	STANDARD RIM	INFLATED OVERALL DIAMETER(mm)		MAX LOAD (kg)	STANDARD BAROMETRIC	MAXSPEED (km/h)
						O.D	S.W			
						+/-1.5%	+/-3.5%			
17.5R 25	2STAR	182/ 167	E3/ L3	28	14.00/ 1.5	1348	445	8500/ 5450	5.75/ 4.5	10/ 50
20.5R 25	2STAR	193/ 177	E3/ L3	31	17.00/ 2.0	1492	520	11500/ 7300	5.75/ 4.5	10/ 50
23.5R 25	2STAR	201/ 185	E3/ L3	34	19.50/ 2.5	1617	597	14500/ 9250	6.5/ 5.25	10/ 50
26.5R 25	2STAR	209/ 193	E3/ L3	37	22.30/ 3.0	1750	673	18500/ 11500	5.75/ 4.5	10/ 50

*TUBELESS TIRE ONLY

DW 516

- ▷ **CHARACTER** WITH WIDE & SPREAD TREAD. EXCELLENT TRACTION & ADHESION
DESIGNED FOR THE COMFORT OF OPERATOR
- ▷ **APPLICATON** ARTICULATED TRUCKS



SIZE	INTENSITY	LOAD INDEX	TRA CODE	TREAD DEPTH(mm)	STANDARD RIM	INFLATED OVERALL DIAMETER(mm)		MAX LOAD (kg)	STANDARD BAROMETRIC	MAXSPEED (km/h)
						O.D	S.W			
						+/-1.5%	+/-3.5%			
23.5R 25	2STAR	201/ 185	E3/ L3	34	19.50/ 2.5	1617	597	14500/ 9250	6.5/ 5.25	10/ 50
26.5R 25	2STAR	209 / 193	E3/ L3	37	22.00/ 3.0	1750	673	18500/ 11500	5.75/ 4.5	10/ 50
29.5R 25	2STAR	216/ 200	E3/ L3	43.5	25.00/ 3.5	1873	750	22400/ 14000	5.75/ 4.5	10/ 50
29.5R 29	2STAR	218/ 202	E3/ L3	43.5	25.00/ 3.5	1975	750	23600/ 15000	5.75/ 4.5	10/ 50

*TUBELESS TIRE ONLY

DW 526



▷ **CHARACTER** EXCELLENT RESISTANCE TO DAMAGE, LONG TYRE LIFE
GOOD GROUND GRASPING AND TRACTION IN HARSH CONDITIONS

▷ **APPLICATON** DUMP TRUCKS

SIZE	INTENSITY	LOAD INDEX	TRA CODE	TREAD DEPTH(mm)	STANDARD RIM	INFLATED OVERALL DIAMETER(mm)		MAX LOAD (kg)	STANDARD BAROMETRIC	MAXSPEED (km/h)
						O.D	S.W			
						+/-1.5%	+/-3.5%			
18.00R 25	2STAR	185	E4	47	13.00/ 2.5	1673	498	9250	7	50

* TUBELESS TIRE ONLY

DW 536



▷ **CHARACTER** REDUCED WHEEL SPIN IN BAD CONDITIONS, GOOD TRACTION, SPECIAL ABRASION RESISTANCE
EXCELLENT RESISTANCE TO DAMAGE

▷ **APPLICATON** DUMP LOADERS

SIZE	INTENSITY	LOAD INDEX	TRA CODE	TREAD DEPTH(mm)	STANDARD RIM	INFLATED OVERALL DIAMETER(mm)		MAX LOAD (kg)	STANDARD BAROMETRIC	MAXSPEED (km/h)
						O.D	S.W			
						+/-1.5%	+/-3.5%			
18.00R 33	2STAR	191	E4T	54	13.00/ 2.5	1877	498	10900	7	50
21.00R 35	2STAR	201	E4T	61	15.00/ 3.0	2052	572	14500	7	50
24.00R 35	2STAR	209	E4T	68	17.00/ 3.5	2175	653	18500	7	50

* TUBELESS TIRE ONLY

DAEWOO RADIAL OTR TIRES

DW 508



▷ **CHARACTER** HIGH SPEED CAPABILITY. EXCEPTIONAL OPERATE COMFORT. LONG TIRE LIFE
INTERMEDIATE TRANSVERSE BLOCK PATTERN. GOOD TRACTION

▷ **APPLICATON** CRANES

SIZE	INTENSITY	LOAD INDEX	TRA CODE	TREAD DEPTH(mm)	STANDARD RIM	INFLATED OVERALL DIAMETER(mm)		MAX LOAD (kg)	STANDARD BAROMETRIC	MAXSPEED (km/h)
						O.D	S.W			
						+/-1.5%	+/-3.5%			
14.00R 24 (385/ 95R 24)	3STAR	170	E2	23	10.00W	1368	375	5600	7	70
14.00R 25 (385/ 95R 25)	3STAR	170	E2	23	10.00/ 1.5	1368	375	5600	7	70
16.00R 25 (445/ 95R 25)	3STAR	179	E2	28	11.25/ 2.0	1493	432	7300	7	70
17.5R 25 (445/ 80R 25)	3STAR	170	E2	28	14.00/ 1.5	1348	445	6000	7	70
20.5R 25 (525/ 80R 25)	3STAR	179	E2	31	17.00/ 2.0	1492	520	7300	7	70

* TUBELESS TIRE ONLY

DW 518



▷ **CHARACTER** HIGH SPEED CAPABILITY. CLOSED SHOULDER DESIGN. SPECIAL ABRASION RESISTANCE
VARIABLE PITCH TO MINIMIZE THE NOISE

▷ **APPLICATON**

SIZE	INTENSITY	LOAD INDEX	TRA CODE	TREAD DEPTH(mm)	STANDARD RIM	INFLATED OVERALL DIAMETER(mm)		MAX LOAD (kg)	STANDARD BAROMETRIC	MAXSPEED (km/h)
						O.D	S.W			
						+/-1.5%	+/-3.5%			
14.00R 24 (385/ 95R 24)	3STAR	170	E2	23	10.00W	1368	375	5600	7	70
14.00R 25 (385/ 95R 25)	3STAR	170	E2	23	10.00/ 1.5	1368	375	5600	7	70
16.00R 25 (445/ 95R 25)	3STAR	179	E2	28	11.25/ 2.0	1493	432	7300	7	70

* TUBELESS TIRE ONLY

DW 546



- ▷ **CHARACTER** PROVIDE EXCELLENT PROTECTION AT HIGH SPEED. LONG TIRE LIFE IN HARSH CONDITIONS
EXCELLENT RESISTANCE TO DAMAGE
- ▷ **APPLICATON** TRUCK
SUITABLE FOR MANY WORKING CONDITIONS

SIZE	INTENSITY	LOAD INDEX	TRA CODE	TREAD DEPTH(mm)	STANDARD RIM	INFLATED OVERALL DIAMETER(mm)		MAX LOAD (kg)	STANDARD BAROMETRIC	MAXSPEED (km/h)
						O.D	S.W			
						+/-1.5%	+/-3.5%			
18.00R 25	2STAR	185	E4P	47	13.00/ 2.5	1673	498	9250	7	50
18.00R 33	2STAR	191	E4P	49	13.00/ 2.5	1877	498	10900	7	50

* TUBELESS TIRE ONLY

DW 503



- ▷ **CHARACTER** SPECIAL TREAD DEPTH. GOOD TRACTION IN WET AND MUDDY ROAD
SPECIAL TREAD DESIGN GUARANTEED THE INTEGRAL BEAUTY
- ▷ **APPLICATON** EARTH MOVERS AND LOADERS

SIZE	INTENSITY	LOAD INDEX	TRA CODE	TREAD DEPTH(mm)	STANDARD RIM	INFLATED OVERALL DIAMETER(mm)		MAX LOAD (kg)	STANDARD BAROMETRIC	MAXSPEED (km/h)
						O.D	S.W			
						+/-1.5%	+/-3.5%			
17.5R 25	2STAR	182/ 167	E3/ L3	28	14.00/ 1.5	1348	445	8500/ 5450	5.75/4.5	10/ 50
20.5R 25	2STAR	193/ 177	E3/ L3	31	17.00/ 2.0	1492	520	11500/ 7300	5.75/ 4.5	10/ 50
23.5R 25	2STAR	201/ 185	E3/ L3	34	19.50/ 2.5	1617	597	14500/ 9250	6.5/ 5.25	10/ 50
26.5R 25	2STAR	209/ 193	E3/ L3	37	22.00/ 3.0	1750	673	18500/ 11500	5.75/ 4.5	10/ 50
29.5R 25	2STAR	216/ 200	E3/ L3	43.5	25.00/ 3.5	1873	750	22400/ 14000	5.75/ 4.5	10/ 50

* TUBELESS TIRE ONLY

DW 505

▷ **CHARACTER** SPECIAL CUT RESISTANCE, LONG TREAD LIFE, ENHANCED STABILITY AND RIDING COMFORT
GOOD TRACTION FOR ROUGH ROAD

▷ **APPLICATON** STONE PIT, INDUSTRY ZONE AND UNDERGROUND MINE



SIZE	INTENSITY	LOAD INDEX	TRA CODE	TREAD DEPTH(mm)	STANDARD RIM	INFLATED OVERALL DIAMETER(mm)		MAX LOAD (kg)	STANDARD BAROMETRIC	MAXSPEED (km/h)
						O.D	S.W			
						+/-1.5%	+/-3.5%			
23.5R 25	2STAR	201	L5	51	19.50/ 2.5	1626	597	14500	6.5	10
26.5R 25	2STAR	209	L5	60	22.00/ 3.0	1775	673	18500	6.5	10
23.5R 25	2STAR	201	L5	87	19.50/ 2.5	1673	597	14500	6.5	10
26.5R 25	2STAR	209	L5	96	22.00/ 3.0	1798	673	18500	6.5	10
29.5R 25	2STAR	216	L5	104	25.00/ 3.5	1921	750	22400	6.5	10
29.5R 29	2STAR	218	L5	104	25.00/ 3.5	2023	750	23600	6.5	10

* TUBELESS TIRE ONLY

DW 504

▷ **CHARACTER** GOOD TRACTION, OPERATE COMFORT, HEAT RESISTANCE FOR HIGH SPEED AND CUT RESISTANCE
GOOD PENETRATE RESISTANCE

▷ **APPLICATON** MANY WORKING PLACE



SIZE	INTENSITY	LOAD INDEX	TRA CODE	TREAD DEPTH(mm)	STANDARD RIM	INFLATED OVERALL DIAMETER(mm)		MAX LOAD (kg)	STANDARD BAROMETRIC	MAXSPEED (km/h)
						O.D	S.W			
						+/-1.5%	+/-3.5%			
26.5R 25	2STAR	193	E4	52	22.00/ 3.0	1750	673	11500	5.25	50
29.5R 25	2STAR	200	E4	57	25.00/ 3.5	1921	750	14000	5.25	50

* TUBELESS TIRE ONLY

DW 507

▷ **CHARACTER** EXCELLENT TRACTION CAPABILITIES, LONG TIRE LIFE, HIGH PROTECTION IN HARSH CONDITIONS
AVAILABLE WITH EITHER CUT-RESISTANCE OR HIGH SPEED CAPABILITY

▷ **APPLICATON** TRUCKS



SIZE	INTENSITY	LOAD INDEX	TRA CODE	TREAD DEPTH(mm)	STANDARD RIM	INFLATED OVERALL DIAMETER(mm)		MAX LOAD (kg)	STANDARD BAROMETRIC	MAXSPEED (km/h)
						O.D	S.W			
						+/-1.5%	+/-3.5%			
18.00R 33	2STAR	191	E4R	54	13.00/ 2.5	1877	498	10900	7	50
21.00R 35	2STAR	190	E4R	54	15.00/ 3.0	2052	572	14500	7	50
24.00R 35	2STAR	199	E4R	68	17.00/ 3.5	2175	653	18500	7	50

*TUBELESS TIRE ONLY

DW 509

▷ **CHARACTER** GOOD TRACTION AND PROTECTION, STABLE COMFORTABLE RIDE
SPECIAL ABRASION RESISTANCE WITH LONG LASTING TREAD LIFE

▷ **APPLICATON** STONE PIT, INDUSTRY ZONE AND UNDERGROUND MINE



SIZE	INTENSITY	LOAD INDEX	TRA CODE	TREAD DEPTH(mm)	STANDARD RIM	INFLATED OVERALL DIAMETER(mm)		MAX LOAD (kg)	STANDARD BAROMETRIC	MAXSPEED (km/h)
						O.D	S.W			
						+/-1.5%	+/-3.5%			
23.5R 25	2STAR	201	L5	78	19.50/ 2.5	1673	597	14500	6.5	10
26.5R 25	2STAR	209	L5	87	22.00/ 3.0	1798	673	18500	6.5	10
29.5R 25	2STAR	216	L5	95	25.00/ 3.5	1921	750	22400	6.5	10
29.5R 29	2STAR	218	L5	95	25.00/ 3.5	2023	750	23600	6.5	10

*TUBELESS TIRE ONLY



DAEWOO BIAS OTR TIRES

H508 E3/L3



SIZE	RIM TYPE		INFLATED DEMENSION		PLY RATING	TT/TL	MAX LOAD		MAX LOAD	
	STANDARD RIM	ALLOWABLE RIM	SECTION WIDTH (MM)	OVERALL DIAMETER (MM)			MAX SPEED	INFLATION PRESSURE	MAX SPEED	INFLATION PRESSURE
14.00-24 14.00-25	10	10.00W,10.0 10.00/1.5	375	1370	12	TT/TL	3350	275	6300	425
					16	TT/TL	4000	375	7300	550
					20	TT/TL	4625	475	8500	700
					24	TT/TL	5150	575	9500	850
15.5-25	12	12.00/1.3	395	1275	8	TT/TL	2575	175	4250	250
					10	TT/TL	3000	225	4875	325
					12	TT/TL	3250	250	5600	400
16.00-24 16.00-25	11.25	11.25/2.0	430	1490	20	TT/TL	5450	400	9750	550
					24	TT/TL	6000	475	10600	650
					28	TT/TL	6700	575	11500	750
					32	TT/TL	7300	650	12500	875
17.5-25	14	14.00/1.5, 14.00/1.3	445	1350	12	TT/TL	3650	225	6150	350
					16	TT/TL	4250	300	7300	475
					20	TT/TL	5000	400	8250	575
					24	TT/TL	5550	425	9100	625
18.00-25	13	13.00/2.5	495	1671	28	TT/TL	8000	500	13600	650
					32	TT/TL	8750	575	15000	750
					36	TT/TL	9250	625	16000	850
					40	TT/TL	9750	700	17000	950



DAEWOO BIAS OTR TIRES

H508 E3/L3



SIZE	RIM TYPE		INFLATED DEMENSION		PLY RATING	TT/TL	MAX LOAD		MAX LOAD	
	STANDARD RIM	ALLOWABLE RIM	SECTION WIDTH (MM)	OVERALL DIAMETER (MM)			MAX SPEED	INFLATION PRESSURE	MAX SPEED	INFLATION PRESSURE
20.5-25	17	17.00/1.7 17.00/2.0	520	1490	16	TT/TL	5450	275	8250	350
					20	TT/TL	6000	325	9500	450
					24	TT/TL	6700	400	10300	525
					28	TT/TL	7500	475	11500	625
23.5-25	19.5	19.00/2.5	595	1615	16	TT/TL	6150	225	9500	300
					20	TT/TL	7300	300	10900	375
					24	TT/TL	8000	350	12500	475
25/65R-25	20	19.50/2.0 20.00/2.0	635	1485	12	TT/TL	4375	175	7300	250
					16	TT/TL	5150	225	8500	325
					20	TT/TL	5800	275	9750	400
26.5-25	22	22.00/3.0	675	1750	20	TT/TL	8250	250	13200	350
					24	TT/TL	9250	300	14000	400
					28	TT/TL	10000	350	15500	475
29.5-25	25	25.00/3.5	750	1875	22	TT/TL	10000	250	15000	325
					24	TT/TL	10750	275	16000	375
					28	TT/TL	11500	325	17500	425
29.5-29	25	25.00/3.5	750	1975	34	TT/TL	14000	400	21200	525
					40	TT/TL	15000	475	23600	625



DAEWOO BIAS OTR TIRES

H528 L4



SIZE	RIM TYPE		INFLATED DEMENSION		PLY RATING	TT/TL	MAX LOAD		MAX LOAD	
	STANDARD RIM	ALLOWABLE RIM	SECTION WIDTH	OVERALL DIAMETER			MAX SPEED	INFLATION PRESSURE	MAX SPEED	INFLATION PRESSURE
			(MM)	(MM)			50KM/H	KPA	10KM/H	KPA
52/80-57	36	36.00/6.0	1321	3579	68	TL			92616	620

H528 L5



SIZE	RIM TYPE		INFLATED DEMENSION		PLY RATING	TT/TL	MAX LOAD		MAX LOAD	
	STANDARD RIM	ALLOWABLE RIM	SECTION WIDTH	OVERALL DIAMETER			MAX SPEED	INFLATION PRESSURE	MAX SPEED	INFLATION PRESSURE
			(MM)	(MM)			50KM/H	KPA	10KM/H	KPA
26.5-25	22	2200/3.0	675	1798	32	TL	11200	425	17000	550
29.5-29	25	25.00/3.5	750	2023	40	TL	15000	475	23600	625
35/65-33	28	28.00/3.5	890	2078	36	TL	14500	375	23600	525
45/65-45	36	36.00/4.5	1140	2733	58	TL			63630	675



DAEWOO BIAS OTR TIRES

H518 E3



SIZE	RIM TYPE		INFLATED DEMENSION		PLY RATING	TT/TL	MAX LOAD		MAX LOAD	
	STANDARD RIM	ALLOWABLE RIM	SECTION WIDTH	OVERALL DIAMETER			MAX SPEED	INFLATION PRESSURE	MAX SPEED	INFLATION PRESSURE
			(MM)	(MM)			50KM/H	KPA	10KM/H	KPA
37.25-35	31	31.00/4.0	945	2390	36	TL	19500	325	30700	450

H568 E4



SIZE	RIM TYPE		INFLATED DEMENSION		PLY RATING	TT/TL	MAX LOAD		MAX LOAD	
	STANDARD RIM	ALLOWABLE RIM	SECTION WIDTH	OVERALL DIAMETER			MAX SPEED	INFLATION PRESSURE	MAX SPEED	INFLATION PRESSURE
			(MM)	(MM)			50KM/H	KPA	10KM/H	KPA
18.00-25	13	13.00/2.5	495	1671	32	TL	8750	575	15000	750
24.00-35	17	17.00/3.5	650	2178	42	TL	16500	550	29000	750
27.00-49	19.5	19.50/4.0	735	2703	48	TL	25000	575	43700	775
33.00-51	24	24.00/5.0	895	3056	58	TL	35500	575	61500	750
36.00-51	26	26.00/5.0	990	3234	58	TL	41200	525	71000	675
37.00-57	27	27.00/6.0	1069	3449	68	TL	51500	525	82500	575
40.00-57	29	29.00/6.0	1095	3594	68	TL	54500	550	92500	725



DAEWOO BIAS OTR TIRES

H578 H598
G2/L2

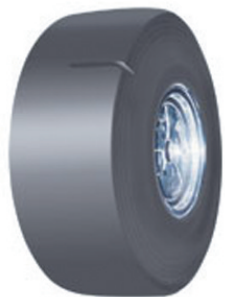


SIZE	RIM TYPE		INFLATED DEMENSION		PLY RATING	TT/TL	MAX LOAD		MAX LOAD	
	STANDARD RIM	ALLOWABLE RIM	SECTION WIDTH (MM)	OVERALL DIAMETER (MM)			MAX SPEED	INFLATION PRESSURE	MAX SPEED	INFLATION PRESSURE
13.00-24	8	8.00TG 10.00VA	330	1280	12	TT/TL	3000	300	5600	450
					16	TT/TL	3300	440	6500	600
					18	TT/TL	3875	450	7100	675
14.00-24	8	8.00TG 10.00VA	360	1350	12	TT/TL	3075	275	6300	425
					16	TT/TL	3650	375	7300	550
					20	TT/TL	3850	425	8100	600
15.5-25	12	12.00/13	395	1275	12	TT/TL	2650	225		
					16	TT/TL	3100	275		
					20	TT/TL	3625	325		
16.00-24	10	1000VA	425	1460	12	TT/TL	3650	225	7100	325
					16	TT/TL	4500	325	8250	425
					20	TT/TL	5000	375		
17.5-25	14	14.00/1.5 14.00/1.3	445	1350	12	TT/TL	2900	200		
					16	TT/TL	3350	275		
					20	TT/TL	3650	325		
20.5-25	17	17.00/2.0 17.00/1.7	520	1490	16	TT/TL	4000	225		
					20	TT/TL	4500	275		
					24	TT/TL	5000	325		
23.5-25	19.5	19.50/2.5	595	1615	16	TT/TL	4750	200		
					20	TT/TL	5450	250		
					24	TT/TL	6150	300		



DAEWOO BIAS OTR TIRES

H588 L5S



SIZE	RIM TYPE		INFLATED DEMENSION		PLY RATING	TT/TL	MAX LOAD		MAX LOAD	
	STANDARD RIM	ALLOWABLE RIM	SECTION WIDTH	OVERALL DIAMETER			MAX SPEED	INFLATION PRESSURE	MAX SPEED	INFLATION PRESSURE
			(MM)	(MM)			50KM/H	KPA	10KM/H	KPA
18.00-25	13	13.00/2.5	495	1671	40	TL	9750	700	17000	950
26.5-25	22	22.00/3.0	675	1798	32	TL	11200	425	17000	550
29.5-25	25	25.00/3.5	750	2018	32	TL	12800	375	18800	475